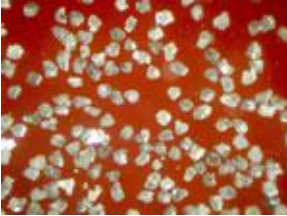


## RVD Diamond Series

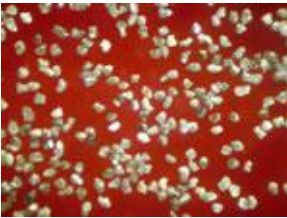
### RVD-A



Irregular shape with low impact strength. Provides good self-sharpening feature and strong mechanical retention.

Applicable for grinding and polishing carbide, fine ceramics, variety of glasses and hard stones, etc.

### RVD-B



Irregular shape with low impact strength than RVD-A. Provides good self sharpening feature and strong mechanical retention.

Applicable for grinding and polishing fine ceramics, optical glasses, medium-hard stones etc.

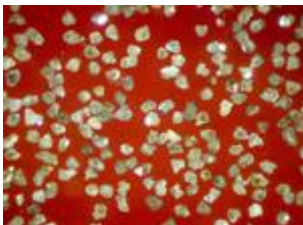
### RVD-C



Irregular shape coupled with medium impact strength. Achieves excellent performances in both resin bond and ceramic bond.

Specially synthesized for grinding and polishing non-ferrous metals and non-metallic materials such as PCD chips, carbide, fine ceramics, glasses, granite.

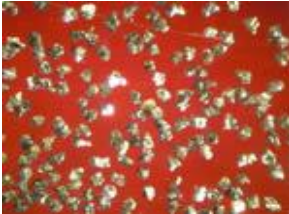
### RVD-D



Highly irregularly shaped crystals coupled with low toughness. Provides optimum performances where both good self-sharpening and strong retention.

Suitable for grinding and polishing fine ceramics, glasses, medium-hard stones.

### RVD-E



Highly irregular shape with low impact strength performing highly self-sharpening feature and strong retention to bond.

Suitable for recommended for fine processing. ceramics, optical glasses, medium hard stones, etc.

### RVD-F



Irregular shape highly irregular shape with low impact strength. Provides excellent performances in both self-sharpening and mechanical retention.

Suited for grinding and polishing fine ceramics, optical glasses, medium-hard stones, etc.